

Manor Royal Maintenance Team - Progress Report for Jan 2018

Planned v's Actual

	Proposed Dec2017	Actual
Litter Pick	X4	Basic litter picking completed once a week (x4) Additional litter picks (x2) on zones 1 and 5
Litter Bin Empty	X4	X8 doubled the bin emptying as we found the bins required a more frequent emptying regime – generally bins are being emptied on a Friday and a Monday. Additional bins at the Terrace and two in Zone 5 are changed on Wednesdays. Due to demand.
Mechanical Road Sweep	X1	Large Mechanical sweeper attended main gate ways to all zones (ongoing) plus Maxwell Way Tinsley Lane
Detritus/leaf removal	X1	Detritus removed from around Street Furniture, bus stops and also subways. Subways have been regular blown and cleared of detritus and leafs(ongoing)
Pavement washing common/high footfall areas and street furniture (Bins etc)	Zone	No pavement cleaning this month due to focusing on edging up of grass verges
Grass Cutting	X1-2 ^a	
Roundabout 'box' grass cutting	X1-2 ^a	
Hedge cutting	-	
Shrub Maintenance	-	
Weed spraying		-
Sign inspection, cleaning and maintenance	-	-
Street furniture inspection (routinely)		-
The Terrace Pocket Park Maintenance	TBA	- Incorporated additional plants with woodchip/bark to add colour to the Terrace
Crawler's Brook People's Park Maintenance	TBA	Additional litter picks (X2) in the park.
Gateway 3 (roundabout) maintenance	TBA	Box mowed cut and collect x1 trial cleaned the chevrons
Blitz Work – <i>as per Green Audit recommendations</i> Grass Encroachment Overgrown Vegetation Moss and weed removal in footpaths		Grass Encroachment (Edging Up) carried out in Zones 4 and 5 working around the Highways work

Fly Tipping Tinsley Lane North

When doing our morning inspection, we drove down Tinsley Lane North and noticed another large pile of fly tipping this month at the end of the road where the footpath starts and leads to Radford Road.

We reported it, to our flytipping removal team and they were able to come out and remove the rubbish straight away. I also contacted the day time Manor Royal Ranger(Dannie) as we discovered some paperwork with addresses and data information that we felt was useful for Dannies investigation work.



Travellers Aftermath

When we were doing our morning inspection we came across some travellers that had stopped at the bottom of Jenner Road. We notified the Manor Royal Ranger Dannie who met us out on site and spoke to them with regards to moving on.

We Came back to Jenner Road the following morning and they had moved on

We then noticed they had left some fly tipping and human excrement which we then cleared.

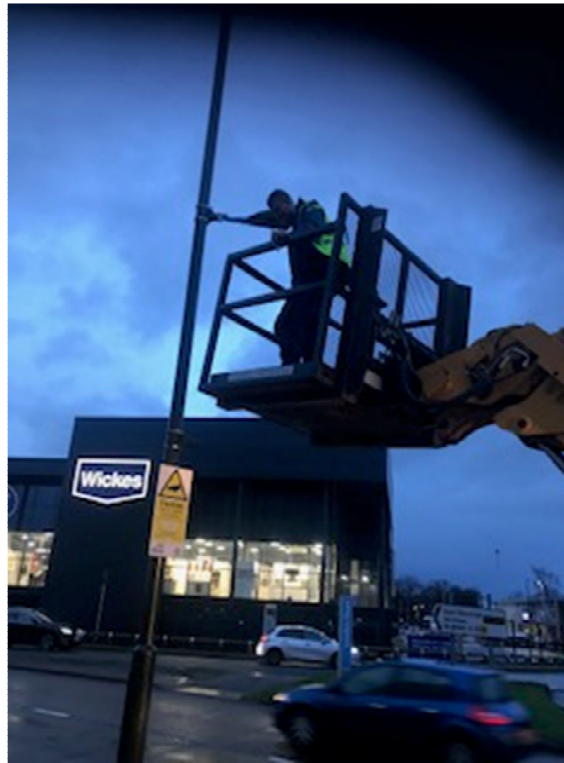


Magpie Walk Footpath



Flooding along Magpie Walk footpath/cycleway. The water looked like it was coming from the new development site. This can be seen through the gate on the photo provided. This was reported to Dannie.

Banner repairs on various zones



Following our return from the Christmas Holiday period, we noticed a lot of banner damage through severe high winds and adverse weather. Below is a list of the banners we have replaced and repaired.

- M roundabout in Zone 2 required 2 new banners. We also had to Undo the straps and re position them to prevent further damage.
- X1 Zone 4 banner needed bottom support bar and strap fitted on Gatwick Road outside the Ambulance Headquarters.
- X1 Zone 5 banner needed bottom support bar and strap fitting. Outside Magellan terrace Gatwick Road.
- Zone 5 Banner next to Pats curry van [outside Topps Tiles] needed straightening and the bottom bar needed new cable ties.
- X1 Zone 3 Banner needed replacing on Napier Way, directly outside Alpha.
- Crompton Way streetlamp number (6) needed existing bar taken down, this at present has not been replaced, as heavy duty transport consistently damage the banners and support bars. Banner needed a cable tie on bottom bar of streetlamp (1).
- Zone 1 Banner was replaced outside Kwik Fit due to adverse weather.

Rubbish found after Christmas holiday period.

On our return to work after the Christmas shut down period, we patrolled the whole of Manor Royal and noticed there was a significant amount of litter on the floor that required our immediate attention.



Crawters Brook Issues



This photo highlights litter issues in Crawters Brook. This is due to a gap in the fence and the litter is coming through from private land. This has been reported to the Rangers.

Tree Debris

When we returned to work from the Christmas holidays, we noticed a lot of scattered tree debris in and around Manor Royal. We cleared the debris as it was looking unsightly and also this will prevent access for our mowers and grass cutting equipment during the grass cutting season and finally for health and safety reasons.



Parking/driving on grass areas

There has been an increase in vehicles, parking on grass/verges in various areas. Photo evidence has been passed on to the Manor Royal Rangers.



Overruns/Lorries cutting across verges



Manor Royal Entrance A23



We decided to tidy up this area as it was getting very unsightly.

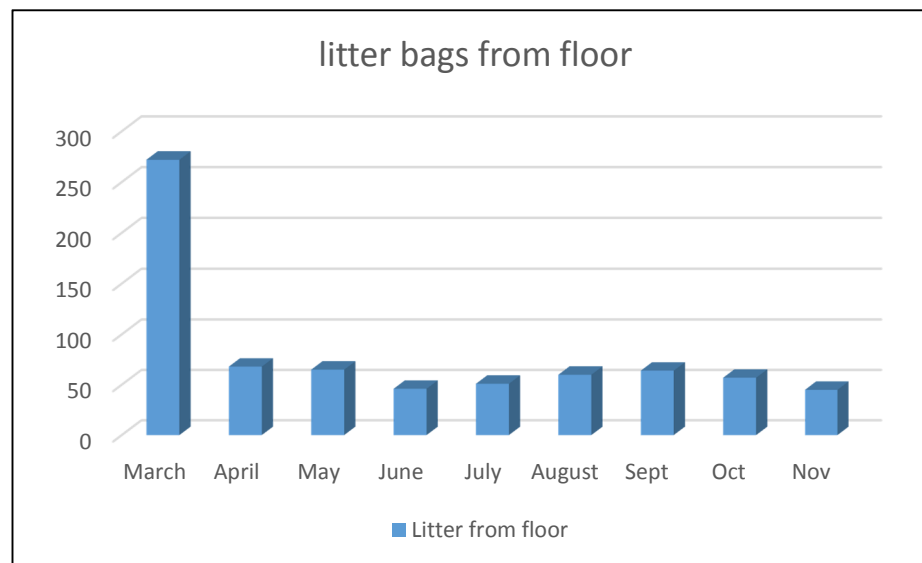
We found that the brambles and reeds had become a litter trap.

Although the land wasn't technically Manor Royal, we decided that it would look more pleasing to the eye if we tidied the complete corner.

Litter

As discussed in our previous meeting, we are not carrying out a data programme for litter at present due to the agreement that the graph data showed reasonable consistency over a nine month period.

If we start to notice an increase in litter being collected of the floor and bins are frequently having to be changed we will revert back to the graph and collect more data.



REPORTS, INFORMATION AND FEEDBACK FOR JANUARY

- Repaired banners that had moved and were damaged due to high winds.
- Fly tipping occurred again in Tinsley Lane North.
- Travellers stopped in Jenner Road and left a lot of fly tipping and Human excrement (this was cleared by us).
- Completed Terrace Park woodland Clearance.(need to use a Flail mower when Ground condition's improve)
- Cleared tree debris from main gateways.
- Edging of encroachment verges carried out in Zones 4 and 5 (ongoing).

Planned activities for February

- Grass encroachment/edging to continue in various Zones
- Investigate into the damage caused to the verges and identify responsibility for repairs and the need for furniture in certain areas.
- Tree Lifting in preparation for Grass Cutting.
- Box mowing Gateway Roundabouts if weather conditions allow
- Weed rip various traffic islands (clear weeds detritus)
- Blow hot spot areas to keep paths clear and safe
- Hedge Cutting commencing.

	FEB
Litter Pick	X4
Litter Bin Empty	X4
Mechanical Road Sweep	X1
Detritus/leaf removal	Subways
Pavement washing common/high footfall areas and street furniture (Bins etc)	Zone 5
Grass Cutting	
Roundabout 'box' grass cutting	
Hedge cutting	-X1
Shrub Maintenance	-
Weed spraying	-
Sign inspection, cleaning and maintenance	
Street furniture inspection (routinely)	
The Terrace Pocket Park Maintenance	X1
Crawter's Brook People's Park Maintenance	
Gateway 3 (roundabout) maintenance	X1
Blitz Work – <i>as per Green Audit recommendations</i> Grass Encroachment Blitz on edging paths in all zones	ongoing